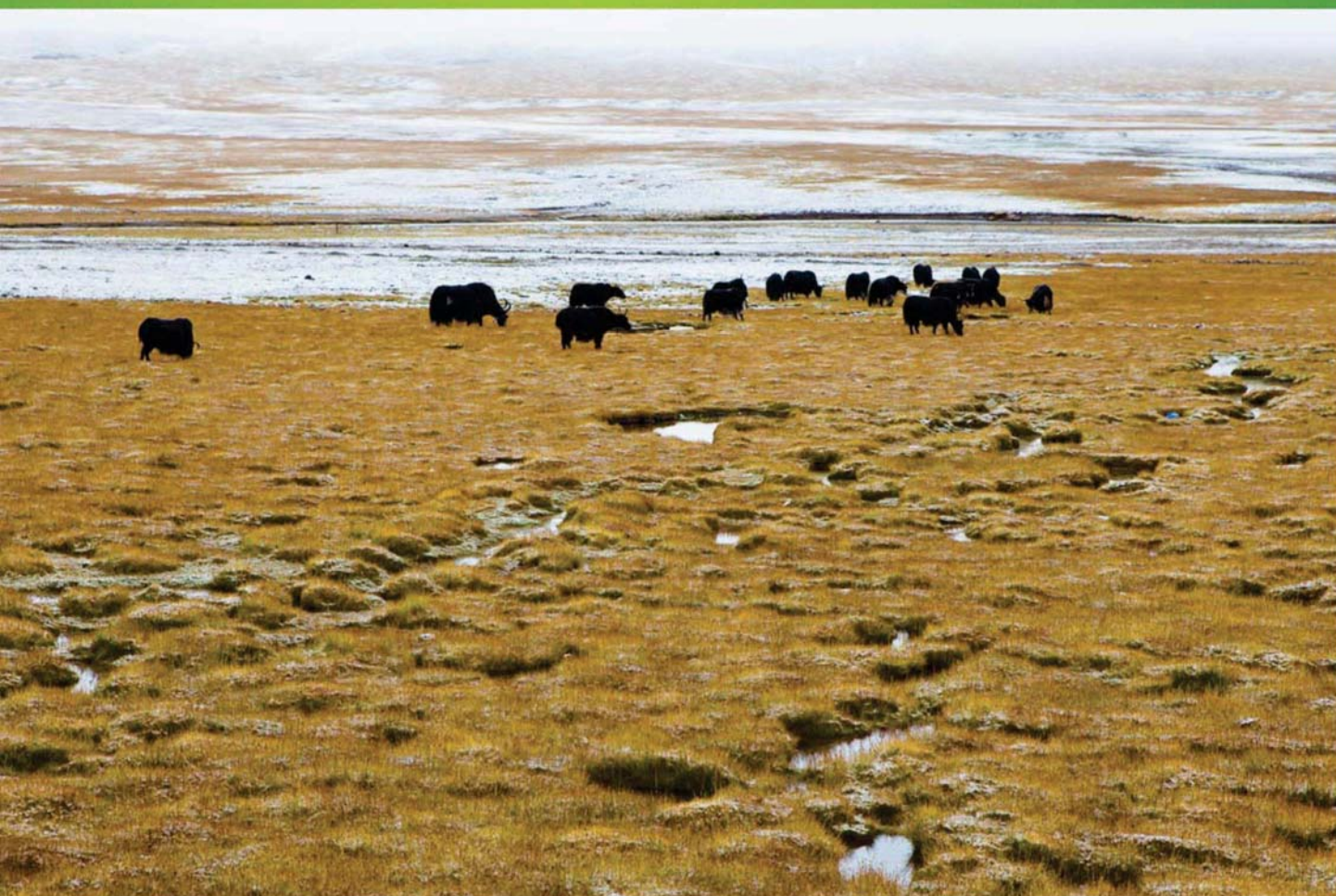


ISSN 1000-0933  
CN 11-2031/Q

# 生态学报

## Acta Ecologica Sinica



第33卷 第16期 Vol.33 No.16 **2013**

中国生态学学会  
中国科学院生态环境研究中心  
科学出版社

主办  
出版



中国科学院科学出版基金资助出版

# 生态学报

(SHENGTAI XUEBAO)

第 33 卷 第 16 期 2013 年 8 月 (半月刊)

## 目 次

### 前沿理论与学科综述

- 物种分布模型理论研究进展..... 李国庆,刘长成,刘玉国,等 (4827)
- 稀土元素对农田生态系统的影响研究进展..... 金姝兰,黄益宗 (4836)
- 藤壶金星幼虫附着变态机制..... 饶小珍,林 岗,许友勤 (4846)
- 群居动物中的共同决策..... 王程亮,王晓卫,齐晓光,等 (4857)

### 个体与基础生态

- 季风进退和转换对中国褐飞虱迁飞的影响..... 包云轩,黄金颖,谢晓金,等 (4864)
- 两种海星对三种双壳贝类的捕食选择性和摄食率..... 齐占会,王 珺,毛玉泽,等 (4878)
- 新疆巴音布鲁克繁殖期大天鹅的生境选择..... 董 超,张国钢,陆 军,等 (4885)
- 我国特有植物青檀遗传结构的 ISSR 分析..... 李晓红,张 慧,王德元,等 (4892)
- 栽培菊花与菊属-近缘属属间杂种杂交后代耐盐性的遗传分析..... 许莉莉,陈发棣,陈素梅,等 (4902)
- 荒漠区植物光合器官解剖结构对水分利用效率的指示作用..... 张海娜,苏培玺,李善家,等 (4909)
- 水分对番茄不同叶龄叶片光合作用的影响..... 陈凯利,李建明,贺会强,等 (4919)
- 广西猫儿山不同海拔常绿树种和落叶树种光合速率与氮的关系..... 白坤栋,蒋得斌,万贤崇 (4930)
- 施肥对板栗林地土壤 N<sub>2</sub>O 通量动态变化的影响..... 张蛟蛟,李永夫,姜培坤,等 (4939)
- 施肥对红壤水稻土团聚体分布及其碳氮含量的影响..... 刘希玉,王忠强,张心昱,等 (4949)

### 种群、群落和生态系统

- 大兴安岭天然沼泽湿地生态系统碳储量..... 牟长城,王 彪,卢慧翠,等 (4956)
- 基于多时相 Landsat TM 影像的汶川地震灾区河岸带植被覆盖动态监测——以岷江河谷映秀-汶川段  
为例..... 许积层,唐 斌,卢 涛 (4966)
- 不同强度火干扰下盘古林场天然落叶松林的空间结构..... 倪宝龙,刘兆刚 (4975)
- 长江中下游湖群大型底栖动物群落结构及影响因素..... 蔡永久,姜加虎,张 路,等 (4985)
- 千岛湖岛屿社鼠的种群年龄结构和性比..... 张 旭,鲍毅新,刘 军,等 (5000)
- 性信息素诱捕下害虫 Logistic 增长及经济阈值数学模型..... 赵志国,荣二花,赵志红,等 (5008)
- 秋末苏南茶园昆虫的群落组成及其趋色性..... 郑颖姘,钮羽群,崔桂玲,等 (5017)
- 北方常见农业土地利用方式对土壤螨群落结构的影响..... 韩雪梅,李丹丹,梁子安,等 (5026)

### 景观、区域和全球生态

- 基于鸟类边缘种行为的景观连接度研究——空间句法的反规划应用..... 杨天翔,张韦倩,樊正球,等 (5035)
- 西南高山地区土壤异养呼吸时空动态..... 张远东,庞 瑞,顾峰雪,等 (5047)

江苏省土壤有机质变异及其主要影响因素..... 赵明松,张甘霖,李德成,等 (5058)

基于林业清查资料的桂西北植被碳空间分布及其变化特征..... 张明阳,罗为检,刘会玉,等 (5067)

### 资源与产业生态

基于能值分析方法的都市代谢过程——案例研究 ..... 刘耕源,杨志峰,陈彬 (5078)

基于 PSR 模型的耕地生态安全物元分析评价 ..... 张锐,郑华伟,刘友兆 (5090)

保水剂对煤矸石基质上高羊茅生长及营养吸收的影响 ..... 赵陟峰,王冬梅,赵廷宁 (5101)

### 城乡与社会生态

生态保护价值的距离衰减性——以三江平原湿地为例 ..... 敖长林,陈瑾婷,焦扬,等 (5109)

### 研究简报

广东山区土壤有机碳空间变异的尺度效应..... 姜春,吴志峰,钱乐祥,等 (5118)

室内养殖雌性松鼠秋季换毛期被毛长度和保温性能变化..... 荆璞,张伟,华彦,等 (5126)

期刊基本参数:CN 11-2031/Q \* 1981 \* m \* 16 \* 306 \* zh \* P \* ¥90.00 \* 1510 \* 32 \* 2013-08



**封面图说:** 高寒草甸牦牛群——三江源区位于青藏高原腹地,平均海拔 4200m,是长江、黄河、澜沧江三条大河的发源地,也是全球气候变化最敏感的地区。三江源区高寒草甸植被状况对该区的生态环境、草地资源合理利用和应对全球气候变化具有十分重要的意义。2005 年以来,国家投资 70 多亿元启动三江源生态保护工程。监测显示,近年来,三江源湖泊湿地面积逐步扩大,植被覆盖度得到提高,三江源区高寒草甸的生态恶化趋势得到遏制。图为冒着风雪在三江源高寒草甸上吃草的牦牛群。

彩图及图说提供: 陈建伟教授 北京林业大学 E-mail: cites.chenjw@163.com

DOI: 10.5846/stxb201208271208

饶小珍, 林岗, 许友勤. 藤壶金星幼虫附着变态机制. 生态学报, 2013, 33(16): 4846-4856.

Rao X Z, Li G, Xu Y Q. A review on the mechanism of attachment and metamorphosis in barnacle cyprids. Acta Ecologica Sinica, 2013, 33(16): 4846-4856.

## 藤壶金星幼虫附着变态机制

饶小珍\*, 林 岗, 许友勤

(福建师范大学生命科学学院, 福建省发育与神经生物学重点实验室, 福州 350108)

**摘要:**藤壶属节肢动物门(Arthropoda)甲壳亚门(Crustacea)蔓足下纲(Cirripedia)围胸总目(Thoracica), 具备特殊的形态结构、生活史和种群生态特征, 是最主要的海洋污损生物。其幼虫阶段通常经历 6 期无节幼体和 1 期不摄食的金星幼虫, 从浮游的金星幼虫附着变态成固着的稚体是藤壶生活史中的一个关键环节。外界化学和生物因子中成体提取物、水溶性信息素、足迹、神经递质、激素、生物膜等均影响藤壶金星幼虫的附着变态; 内在因子即金星幼虫的生理状态(能量储量和年龄)决定了其对外界因子的反应程度。概括了近年来藤壶附着变态生理机制和分子机制研究的进展, 可为深入了解藤壶金星幼虫附着变态机制提供参考, 也为开发新型、高效、环保的防污剂提供理论指导。

**关键词:**藤壶; 金星幼虫; 附着; 变态

## A review on the mechanism of attachment and metamorphosis in barnacle cyprids

RAO Xiaozhen\*, LIN Gang, XU Youqin

College of Life Sciences, Fujian Normal University, Fujian Key Laboratory of Developmental and Neuro Biology, Fuzhou 350108, China

**Abstract:** Barnacles are the most successful group of fouling organisms in the marine environment because of their morphology, life history and population ecology. Like many benthic marine organisms, barnacles have a complex life cycle. In general, the larval phase includes six planktotrophic naupliar stages followed by one non-feeding cypris larval stage. The lecithotrophic cyprids are specialized for locating suitable attachment sites and commencing metamorphosis (both processes are often referred to as “settlement”) to juvenile barnacles.

It is believed that pelagic cyprids have active behavioral responses to the physical, chemical and biological properties of a substratum surface, which lead to their gregarious settlement. Furthermore, endogenous factors, such as the physiological condition of the cyprids, determine how their attachment and metamorphosis is affected by exogenous stimuli. Thus, this article reviews recent discoveries on the physiological and molecular mechanisms of attachment and metamorphosis in barnacle cyprids.

A wide variety of chemical and biological exogenous factors (adult conspecific extract, waterborne pheromones, footprints, neurotransmitters, hormones and biofilms) affect the attachment and metamorphosis of barnacle cyprids. For example, adult conspecific extract is a water-soluble glycoprotein that induces conspecific cypris settlement in its substratum-bound conformation. This adult conspecific extract, which was previously known as arthropodin, is now known as the settlement-inducing protein complex (SIPC). This complex has been isolated from the adult extract, biochemically characterized, genetically cloned, and its expression pattern has been examined during barnacle larval development, attachment and metamorphosis. Similarly, waterborne pheromone is released into the water column by adults and can be detected by cyprids in solution. The waterborne pheromone is a small peptide with a basic carboxy terminus and a neutral,

基金项目:福建省自然科学基金(2011J01147)

收稿日期:2012-08-27; 修订日期:2013-04-24

\* 通讯作者 Corresponding author. E-mail: xzrao@fjnu.edu.cn

or basic amino terminus, which induces cypris settlement. Cyprids also secrete an antennular footprint, which acts as a secondary cue in larval-larval interactions during settlement. The material basis of footprints for inducing settlement either contains, or is equivalent to SIPC. Neurotransmitters (e. g. acetylcholine, dopamine, serotonin, catecholamines, and noradrenaline) stimulate the secretion of adhesive granules from the cement glands, and the attachment and (or) metamorphosis of cyprids. Likewise, hormones (e. g. methyl farnesoate, juvenile hormone III, 20-hydroxyecdysone and ecdysone mimic RH5849) are reported to induce attachment and (or) metamorphosis of cyprids. Finally, biofilms, which are assemblages of microorganisms and organic molecules, play a key role in the cypris settlement process. Biofilms can facilitate, inhibit or have no effect on attachment and metamorphosis of cyprids, with their role determined by density, composition, physiological condition, and growth phase of the bacteria.

The physiological condition of cyprids is mainly controlled by their energy reserves and age, with their energy reserves a major determinant of their physiological quality. A cyprids energy status is measured as an index of their lipid, nucleic acid and protein content. Additionally, the age and ageing temperature of cyprids significantly affects their settlement ability. For example, newly molted cyprids would not yet have gained their settlement ability, but cyprids progressively lose their settlement ability with age.

This review provides new insights into the attachment and metamorphosis mechanisms of barnacle cyprids, providing a foundation for developing new, efficient, and less environmentally damaging antifoulants.

**Key Words:** barnacle; cyprid; attachment; metamorphosis

海洋污损生物又称海洋附着生物,是生长在船底和海中一切设施表面的动物、植物和微生物。当污损生物大量繁衍且未能及时清除,会对海洋设施如码头、港口、运输管道、船舶等造成极大的破坏并祸及水产养殖业,给沿海各国的经济造成巨大损失<sup>[1-2]</sup>。蔓足类中的许多种类如藤壶、茗荷、铠茗荷等均属于污损生物,其中无柄蔓足类——藤壶属节肢动物门(Arthropoda)、甲壳亚门(Crustacea)、蔓足下纲(Cirripedia)、围胸总目(Thoracica)<sup>[3]</sup>,具备特殊的形态结构、生活史和种群生态特征,是最主要的海洋污损生物<sup>[4-9]</sup>。美国、英国、日本以及其它沿海国家对藤壶等污损生物的防除问题非常重视,以纹藤壶(*Balanus amphitrite*)为模型生物对藤壶的附着变态机制进行了大量研究<sup>[2,5,9-15]</sup>,以期海洋污损生物的防治特别是开发高效环保无毒的防污剂提供理论依据。

蔓足类的生活史通常要经过营浮游生活的6期无节幼体(naupliar)、不摄食的金星幼虫(cyprid)、固着的稚体和成体几个发育阶段<sup>[3,11,15-16]</sup>。浮游的金星幼虫发育到固着的稚体阶段,其形态结构及生活习性发生了很大的变化。金星幼虫是蔓足类生活史中的一个重要阶段,其唯一的作用是选择适宜附着的基质并完成变态<sup>[6,16-17]</sup>。在附着变态过程中,金星幼虫的游泳足快速划动,以规律性的“步伐”在基质表面行走,通过第一触角探测附着基质,分泌临时胶体形成足迹;如果基质条件适宜,金星幼虫即分泌永久胶体附着,进而变态为稚体,个体进入固着阶段<sup>[17-19]</sup>。Lagersson等把金星幼虫的固着行为分为5个分离的阶段:游泳、基质的探测、广泛的探索、紧密的探索、白垩腺的分泌及永久附着<sup>[17]</sup>。自然状态下金星幼虫的固着行为包括两个连续的过程,即附着和变态<sup>[11,16]</sup>。因此,浮游的金星幼虫附着变态成固着的稚体是蔓足类发育过程中的一个关键环节,如果金星幼虫不能完成附着变态,最终只有死亡。

一般认为自由游泳的金星幼虫通过基质表面的物理因子、化学因子和生物因子的诱导产生一种特别的行为反应,导致聚集固着的发生<sup>[6,9,16,20-21]</sup>。早期的研究主要侧重于各种物理因子对金星幼虫附着变态影响的探讨,底质类型<sup>[22]</sup>、颜色和光照、表面张力、温度和盐度<sup>[12,23]</sup>、表面湿度<sup>[24]</sup>、超声波<sup>[25]</sup>等因子均能影响金星幼虫的附着变态。进一步的研究表明,与物理因子相比化学和生物因子对金星幼虫附着变态的影响更为显著,近年来国外更多的研究集中在化学和生物因子方面<sup>[2,10,16,26-27]</sup>。同时金星幼虫在附着变态过程中对外界因子的反应程度还依赖于其内在因子,即生理状态(如能量储量和年龄)<sup>[28-29]</sup>。本文概括了近年来藤壶附着变

态生理机制和分子机制研究的进展,从成体提取物、水溶性信息素、足迹、神经递质、激素、生物膜和金星幼虫的生理状态等对藤壶金星幼虫附着变态的影响进行综合阐述,希望能对我国相关工作的进一步开展提供借鉴与参考。

## 1 外界化学和生物因子的影响

### 1.1 成体提取物

藤壶的聚集固着行为已被人们认识很久,实验室和野外的实验都表明金星幼虫喜欢固着在同种个体的周围,这一行为称为聚集<sup>[30]</sup>。早在 20 世纪 50—60 年代就有实验表明藤壶(*Semibalanus balanoides*)能诱导其金星幼虫的附着变态,人们把其中未知的诱导因子称为节肢蛋白(与角质层相联系)<sup>[31]</sup>;该因子的化学性质类似于肌动蛋白,是一种粘性蛋白,但在水溶液中不能独立诱导金星幼虫的附着变态,必须与基质结合<sup>[16]</sup>。Larman 等进一步指出 *S. balanoides* 的诱导因子是由 5000—6000 Da 和 18000 Da 亚基组成的多态蛋白<sup>[32]</sup>,随后更多的研究表明藤壶成体提取物能诱导金星幼虫的附着变态<sup>[12,24]</sup>,目前开展的各种因子对金星幼虫附着变态影响的许多实验也都是在成体提取物的诱导下进行的<sup>[2,10-11,27]</sup>。

近年从纹藤壶中分离纯化出的“诱导固着蛋白复合物(SIPC)”是一种高分子量的糖蛋白,主要由分子量为 76、88、98 kDa 的 3 个亚基组成,每个亚基与整个 SIPC 一样具有诱导金星幼虫固着的活性<sup>[26]</sup>。藤壶成体粗提物<sup>[33]</sup>或纯化物 SIPC 的亚基<sup>[26]</sup>中能与小扁豆凝集素结合的特殊糖链在金星幼虫的附着变态中起重要作用,但环境中各种单糖和二糖对金星幼虫附着变态的影响取决于糖的种类和浓度<sup>[10]</sup>。SIPC 可在藤壶无节幼体发育过程中合成并积累在金星幼虫体内,而后金星幼虫分泌 SIPC 至第一触角的附着盘<sup>[34]</sup>。SIPC 是一种固着诱导信息素,SIPC(或类 SIPC 蛋白)在纹藤壶固着时参与了成体与幼虫间及幼虫与幼虫间的相互作用<sup>[34-35]</sup>。

序列分析结果表明,SIPC 与  $\alpha_2$ -巨球蛋白( $\alpha_2$ -macroglobulin)家族有 30% 的相似性,其 cDNA (5.2 kb) 编码包含 1547 个氨基酸的蛋白质前体,可能是由一个  $\alpha_2$ -巨球蛋白基因的祖先复制进化而来;SIPC 的 mRNA 不仅在成体的各个器官表达,也在稚体和幼虫阶段广泛表达<sup>[35]</sup>。在幼虫和成体角质层中表达的糖蛋白与 SIPC 的 mRNA 同时出现;表明 SIPC 由上皮细胞产生并分泌到角质层,SIPC 在金星幼虫的附着变态中作为接触信息素起作用<sup>[36]</sup>。现在,一般认为早期命名的节肢蛋白就是现在的 SIPC,它是一种角质层糖蛋白<sup>[26,34,36]</sup>。

藤壶不同部位(外壳、软体部、整体)提取物的诱导活性有所不同,一般整体提取物比外壳和软体部提取物的诱导活性高<sup>[10]</sup>。不仅同种藤壶的提取物具有诱导作用,异种藤壶的提取物也表现出诱导作用<sup>[11,37]</sup>。SIPC 样的糖蛋白在藤壶中普遍存在,但是异种藤壶间 SIPC 的诱导活性有所不同<sup>[37]</sup>。采用成体粗提物和纯化物 SIPC<sup>[38]</sup>进行的实验均表明金星幼虫在附着变态中对同种提取物的反应比异种提取物的强烈。因此,藤壶固着诱导信息素活性的强弱可以反映它们的系统亲缘关系<sup>[24,37]</sup>。

### 1.2 水溶性的信息素

除了以 SIPC 为代表的接触信息素(须与基质表面结合)能对金星幼虫产生诱导作用外,藤壶还可产生改变金星幼虫行为的水溶性信息素<sup>[31]</sup>,Rittschof 率先证实了水溶性信息素的存在<sup>[39]</sup>,认为纹藤壶体内 3000—5000 Da 的多肽能诱导金星幼虫的固着<sup>[39-40]</sup>。一般水溶性的信息素是指从藤壶体内释放的能诱导金星幼虫附着行为和变态的分子量小于 500 Da 的多肽<sup>[16]</sup>,它所含有一个碱性羧基端和一个中性或碱性氨基端对其生物活性是重要的<sup>[40-41]</sup>。几个具有这种结构特征的二肽或三肽如甘氨酸-甘氨酸-精氨酸(GGR)具有类似的诱导能力<sup>[40]</sup>。虽然在野外 GGR 能诱导金星幼虫的固着<sup>[42]</sup>,但在实验室内并不能证实 GGR 的活性<sup>[43]</sup>。最近许多的研究表明水溶性的信息素在金星幼虫的固着中起重要作用<sup>[44-46]</sup>,它的生态作用可能是通过刺激金星幼虫的附着行为进而促进浮游阶段向固着阶段的转变,而不是与 SIPC 一样直接诱导金星幼虫的永久附着和变态<sup>[46]</sup>。从纹藤壶的成体提取物中还纯化出另一种诱导蛋白,其分子量为(31600±500)Da,但与 SIPC 无关;它能迅速诱导金星幼虫的探索行为,这种诱导蛋白被认为可能是一种水溶性的信息素<sup>[47]</sup>。有关水溶性信息素的生态作用、来源以及理化特性等仍有许多工作要做。

### 1.3 足迹

Walker 等发现 *S. balanoides* 的金星幼虫在探测基质时,在基质表面会留下触角分泌物——即蛋白质“足迹”<sup>[48]</sup>。Nott 等认为这种“足迹”是金星幼虫的临时胶体,由单细胞腺产生并分泌至第一触角附着盘<sup>[18]</sup>。在纹藤壶的金星幼虫中也证实了“足迹”的存在,其除了起临时胶体的作用外,还有第二种功能即行使固着诱导信息素的作用<sup>[49]</sup>。一般认为“足迹”的存在可以提高基质表面的吸引力,在基质表面不存在同种成体的情况下,金星幼虫也可以产生聚集固着<sup>[48-49]</sup>。免疫染色法显示金星幼虫的“足迹”含有 SIPC,金星幼虫整体免疫组织化学的实验结果也证明了金星幼虫的“足迹”与 SIPC 之间的化学关系,从而说明金星幼虫的“足迹”为什么可以诱导金星幼虫的固着<sup>[34]</sup>。使用 SIPC 的 N-端与 C-端多肽制备的多克隆抗体检测金星幼虫的“足迹”,同样证明 SIPC 是足迹蛋白的一个成份或两者是同样的蛋白<sup>[50]</sup>。

总之,研究结果表明金星幼虫“足迹”对其附着变态起诱导作用的物质基础仍是 SIPC。

### 1.4 神经递质和激素

有关神经递质和激素等信号传导物质在金星幼虫附着变态中的作用一直受到人们的重视。Clare 等认为第二信使(cAMP)参与金星幼虫附着变态的调节<sup>[51]</sup>。乙酰胆碱和多巴胺通过参与纹藤壶金星幼虫肌肉收缩及白垩腺胶体物质的分泌进而调节金星幼虫的附着变态<sup>[52-53]</sup>;同样,儿茶酚胺包括多巴胺是参与红巨藤壶(*Megabalanus rosa*)金星幼虫白垩腺胶体物质的分泌而不是直接诱导附着变态的发生<sup>[54]</sup>。多巴胺能诱导纹藤壶金星幼虫产生没有附着的变态<sup>[55]</sup>或抑制金星幼虫的附着变态<sup>[56]</sup>,5-羟色胺的作用仅调节金星幼虫的附着<sup>[56]</sup>或是诱导金星幼虫附着和变态<sup>[53,55]</sup>。这两种神经递质对致密藤壶(*B. improvisu*)的效应则截然不同,多巴胺能诱导其金星幼虫的固着,而5-羟色胺却抑制其金星幼虫的固着<sup>[57]</sup>。去甲肾上腺素能诱导纹藤壶金星幼虫产生没有附着的变态且变态过程比自然过程延长许多,其机理是去甲肾上腺素能干扰金星幼虫白垩腺胶体物质的分泌,导致其放弃探索行为而不能粘附在基质表面,进而直接变态成为稚体<sup>[7]</sup>。一些研究进一步从分子水平证明胞内合成的5-羟色胺和多巴胺至少部分参与了金星幼虫附着变态的调节<sup>[58]</sup>。

蛋白激酶 C(PKC)在纹藤壶金星幼虫的变态中可能起重要作用,但没有参与其附着行为<sup>[59]</sup>。甲基法尼酯(methyl farnesoate)和保幼激素(juvenile hormone III)能诱导金星幼虫产生没有附着的变态即早熟变态<sup>[60-61]</sup>,前者可能通过蛋白激酶 C 信号传导系统诱导金星幼虫的变态<sup>[60]</sup>或是在金星幼虫体内起保幼激素的作用<sup>[61]</sup>。20-羟基脱皮酮(20-hydroxyecdysone)在低浓度时能促进金星幼虫的附着变态,但在其高浓度的作用下金星幼虫只附着却不变态<sup>[62]</sup>。蜕皮激素类似物 RH5849 也能诱导金星幼虫正常附着变态<sup>[63]</sup>。钙调蛋白(CaM)是一种主要的胞内钙结合蛋白,可以调节钙偶联信号传导途径,在金星幼虫附着变态中参与包括肌球蛋白轻链激酶和钙调蛋白激酶在内的酶促反应,也是金星幼虫变态时的一种调节剂<sup>[64]</sup>。

### 1.5 生物膜

生物膜往往是藤壶金星幼虫在野外附着变态的先决条件,在金星幼虫栖息地的选择和固着中起重要作用<sup>[20-21,28,65-67]</sup>。研究生物膜对藤壶附着变态的影响主要通过单种细菌膜和自然生物膜两种类型的实验。在实验室中许多工作研究了从自然生物膜中分离的在人工基质上培养的单种细菌膜对金星幼虫附着变态的影响<sup>[2,14,67-69]</sup>。单种细菌膜显示了不同的效应<sup>[20]</sup>,由于细菌种类的不同可以是促进<sup>[66,68-70]</sup>、抑制<sup>[68-69,71-72]</sup>或不产生任何影响<sup>[73]</sup>。

在单种细菌膜的基础上,人们还进一步研究了多种人工生物膜<sup>[27,67]</sup>及自然生物膜在野外<sup>[28,65,70,73-74]</sup>或在实验室<sup>[2,66,68-69,74-75]</sup>对金星幼虫附着变态的影响。自然生物膜对金星幼虫附着变态的影响也是复杂的<sup>[20]</sup>,可以是刺激作用<sup>[66,72]</sup>、抑制作用<sup>[28]</sup>或没有效果<sup>[73]</sup>。生物膜的细菌群落结构在决定生物膜对金星幼虫的吸引力方面起重要作用<sup>[66,73]</sup>,而生物膜的年龄则影响其细菌密度<sup>[66,73]</sup>、种类组成<sup>[68]</sup>、生理状况及生长阶段<sup>[20,66,69,73,75]</sup>等群落参数。因此,一般老化的生物膜对金星幼虫的固着有促进作用而形成不久的生物膜却起抑制作用。这是由于细菌密度的增加、细菌多样性的增加以及生物膜代谢活力的变化引起的<sup>[69]</sup>,但也有完全相反的效应<sup>[21,28]</sup>,这取决于生物膜的来源<sup>[73-74]</sup>。另外,自然生物膜附着的基质<sup>[68]</sup>、环境条件(水温和盐

度<sup>[75]</sup>、底质特性<sup>[21]</sup>)、潮位(群落结构在生物量、丰度、多样性等方面不同)<sup>[66]</sup>等均影响生物膜的效应。虽然表面湿度和生物膜的群落组成在金星幼虫的固着过程中起关键作用<sup>[21,76]</sup>,但不论在哪种湿度的基质上老化的生物膜均能诱导金星幼虫的固着,说明表面湿度并不能改变自然生物膜在金星幼虫固着中的积极作用<sup>[68]</sup>。

除了生物膜本身的作用外,细菌分泌的胞外产物也能影响金星幼虫的固着行为<sup>[13,65,71,76]</sup>。细菌分泌的产物如培养上清液<sup>[2,13,67,69]</sup>和胞外多糖<sup>[2,67,72,76]</sup>在金星幼虫附着变态中的效应也被广泛研究,但胞外产物的效应还受到许多其他因素的影响。不同种类的细菌<sup>[13,72]</sup>或不同培养基培养的同种细菌<sup>[2,67]</sup>分泌的胞外产物效应不同;不同的盐度条件<sup>[67]</sup>、成体提取物存在与否<sup>[67]</sup>同一胞外产物的效应有所不同;同种细菌产生的表面结合的诱导物和水溶性的诱导物的效应也不同<sup>[67]</sup>。另外在凝集素的作用下细菌膜的效应会发生变化,凝集素能从两个方向改变诱导信号<sup>[72]</sup>。凝集素通过与胞外产物特定的糖分子反应能调节细菌膜的效应,在引导金星幼虫趋向固着终点上起重要作用<sup>[72]</sup>。特别是小扁豆凝集素能阻断细菌膜的促进作用,说明细菌膜产生的胞外产物可能含有一种类似于藤壶成体提取物 SIPC 特性的特殊糖链<sup>[72]</sup>。

以往对生物膜的研究多集中于细菌,近年也有一些研究关注生物膜中的其它生物类群(如硅藻)<sup>[77-78]</sup>。不同种类的硅藻对金星幼虫的效应不同,有的抑制、有的促进、有的没有明显作用<sup>[77]</sup>。研究表明对金星幼虫固着起促进作用的硅藻含有与小扁豆凝集素结合的糖链,说明硅藻中能与小扁豆凝集素结合的糖链化合物可能与从藤壶成体中分离纯化的 SIPC 的作用相似<sup>[77]</sup>。

## 2 金星幼虫的生理状态

金星幼虫对外界因子或诱导信号的反应程度还依赖于其生理状态(如能量储量和年龄),金星幼虫的生理状态影响它对基质的选择和最终变态的成功<sup>[28-29,79]</sup>。

### 2.1 金星幼虫的能量储量

金星幼虫的能量储量是其生理状态的一个决定因子,是其附着变态能否成功的保证,它取决于无节幼体生长经历的条件(特别是食物藻类的数量和质量)<sup>[79]</sup>。通常采用脂类、核酸、蛋白质的含量作为金星幼虫的营养指标,指示金星幼虫的能量状况。金星幼虫将储存能量的 38%—58% 用于变态,其中脂类占 55%—65%、蛋白质占 34%—44%、碳水化合物占 <2%<sup>[80]</sup>。

脂类的含量如三酰甘油/固醇(TAG/ST)的比率可指示金星幼虫的能量状况,三酰甘油含量的高低反映了金星幼虫固着成功的可能性<sup>[29]</sup>。无节幼体食物(藻类)的脂类(三酰甘油 TAG)含量和金星幼虫总的能量储量间存在显著的正相关<sup>[79]</sup>。金星幼虫 TAG/DNA 的比率可作为能量储量的另一个指标,这个指标可表示金星幼虫变态能力的大小<sup>[79,81]</sup>。根据 TAG/DNA 的比率可将金星幼虫分为高、中、低 3 个营养等级,在缺乏成体诱导物时,营养等级高的金星幼虫变态率高于营养等级低金星幼虫<sup>[79,81-82]</sup>。

核酸 RNA/DNA 的比率也可作为营养状况的指标。无节幼体的经历可通过 RNA/DNA 这一比率的高低,最终决定金星幼虫的附着变态能力;在同样条件下 20 °C 培养的无节幼体其 RNA 的含量比在 30 °C 培养的明显低,无节幼体 RNA 含量的大小决定了金星幼虫在 5 °C 老化时的存活能力及附着变态能力<sup>[83]</sup>。

金星幼虫的生理状态还与“金星幼虫主要蛋白”(cyprid major protein, CMP)有关,在金星幼虫附着变态过程中, CMP 是内源的能量来源<sup>[84]</sup>。纹藤壶 CMP 的分子量为 170 kDa,与卵黄蛋白重链的分子量相同,其生化和免疫特性与卵黄蛋白相似<sup>[84-85]</sup>。在幼虫发育中 CMP 含量随着无节幼体的发育不断增加,到金星幼虫阶段 CMP 含量达到最高,而后随着金星幼虫虫龄的增大其含量显著下降<sup>[84]</sup>。

### 2.2 金星幼虫的生理年龄和保存的环境条件

金星幼虫的生理状况不仅由无节幼体的摄食历史还由其生理年龄<sup>[79]</sup>和环境条件<sup>[11,80]</sup>决定。Harder 等<sup>[86]</sup>发现金星幼虫的年龄影响其附着变态能力,具有相同油脂含量的 3 个年龄(0、3 d 和 6 d)的金星幼虫的固着率间有显著差异;年幼的金星幼虫固着率与其油脂含量间有显著的正相关,而年老的金星幼虫两者间的关系较弱。在 20 °C 培养的金星幼虫在 5 °C 保存 2—4 d 能成功变态,而 30 °C 培养的金星幼虫在 5 °C 保存长达 8—16 d 也能成功变态<sup>[83]</sup>。金星幼虫体内的 CMP 含量变化与保存温度密切相关,在 25、20、15 °C 中金星幼虫



CMP 含量随时间的延长显著下降,在 5 ℃时金星幼虫 CMP 的含量保持稳定;但不论在哪个温度组,都以 3 天虫龄的金星幼虫变态率最高,之后随金星幼虫虫龄的增大变态率降低<sup>[87]</sup>,因此金星幼虫的保存温度影响其固着能力。长期以来多认为低温(5、15 ℃)比高温(20、25 ℃)有利于维持其固着能力<sup>[87]</sup>,也有结果表明高温(23 ℃)比低温(6℃)更有利于保持其固着能力<sup>[11]</sup>。一般认为刚出生的金星幼虫(0d)不具有附着变态能力,金星幼虫的附着变态能力与年龄的关系为:前期随虫龄的增大附着变态能力逐渐提高,后期随虫龄的增大附着变态能力逐渐减弱<sup>[11,87]</sup>。如 0—3 d 的金星幼虫以第 3 天幼虫的固着率最高,随后随虫龄的增大固着率降低<sup>[87]</sup>;0—10 d 的金星幼虫以第 10 天幼虫的固着率最高,随后固着率降低,至 14—15 d 丧失附着变态能力<sup>[11]</sup>。一般来说金星幼虫需要一个固着能力获得的时期(刚出生的金星幼虫虽然 CMP 含量最高,但不具有固着能力),之后随时间的延长其脂类或 CMP 含量下降,固着能力逐渐丧失,最终不足以支持附着变态<sup>[11,29,87-88]</sup>。因此,金星幼虫的生理年龄也与其附着变态能力息息相关,刚诞生的金星幼虫尚未获得固着能力,而虫龄较大的金星幼虫多已丧失固着能力。

### 3 金星幼虫基质选择的分子机制

在金星幼虫附着变态的过程中,藤壶金星幼虫特异基因 *bcs-1* 和 *bcs-2* 的 mRNAs 的表达降低,而 *bcs-3*, *bcs-4*, *bcs-5* 和 *bcs-6* 的 mRNAs 的表达增加<sup>[89]</sup>。在诱导物和抑制物的作用下,这 6 个 *bcs* 基因的表达不同,其中诱导物强烈促进 *bcs-6* 的表达<sup>[90-91]</sup>,而某些抑制物抑制 *bcs-6* 的表达<sup>[90]</sup>,表明这些化学物质通过调节 *bcs* 基因,特别是 *bcs-6* 的表达参与金星幼虫的附着变态和基质的选择,并在金星幼虫附着变态的调节中起关键作用<sup>[90-91]</sup>。

芳香族 L-氨基酸脱羧酶能分别促进 5-羟色氨酸、3,4-二羟基苯丙氨酸合成 5-羟色胺、多巴胺。5-羟色胺和成体提取物能明显提高芳香族 L-氨基酸脱羧酶基因 mRNA 在金星幼虫中的表达,说明胞内合成的 5-羟色胺和多巴胺至少部分参与金星幼虫附着变态的调节<sup>[58]</sup>。通过比较 II 期无节幼体、浮游阶段的金星幼虫、刚附着的金星幼虫和已变态的金星幼虫的蛋白质图谱,可见浮游阶段金星幼虫的蛋白质图谱明显不同于其它阶段<sup>[92]</sup>。分化表达的蛋白质主要包括信号转导蛋白(腺苷酸环化酶和钙调蛋白)和保幼激素结合蛋白,这些蛋白质在金星幼虫的基质选择,例如信号识别、信号传导和放大以及幼体组织的准备中起关键作用<sup>[92]</sup>。

蛋白质的磷酸化作用是调节许多胞内快速反应最重要的分子转换机制。研究表明,金星幼虫变态的蛋白质组反应主要变化是蛋白质的磷酸化而不是重新合成蛋白质,对金星幼虫的固着而言,去磷酸化作用是必要的过程,来自适宜基质的诱导信号能激活金星幼虫的磷酸酯酶,最终导致一系列生化变化和随后的附着变态<sup>[93]</sup>。蛋白质组和磷酸化蛋白质组分析表明,刚形成的金星幼虫(0h)和老化的金星幼虫(24h)的蛋白质表达和翻译后的修饰是高度动态的,与压力和与能量代谢相关的两组蛋白在金星幼虫的发育中分化表达,表明参与压力调节和能量代谢的蛋白质在金星幼虫附着变态的调节中起重要作用<sup>[94]</sup>。

### 4 结语与展望

我国海域辽阔,海岸线绵长,海洋环境复杂多样,每年污损生物(包括无柄蔓足类)对我国海洋经济活动和国防建设造成的损失难以估算。国内对无柄蔓足类的种类组成、区系分布、生态特点和防除等方面已有许多研究<sup>[4,95-96]</sup>。自 70 年代末以来,我国科研人员在藤壶生物学方面也做了一些工作,包括幼虫培养<sup>[97-98]</sup>、发育<sup>[99]</sup>、附着<sup>[100-101]</sup>和藤壶胶<sup>[102-103]</sup>等方面,但有关藤壶附着变态的生理机制研究较少<sup>[97,104]</sup>。希望更多的学者能涉及这方面的工作,揭示无柄蔓足类附着变态的机制,为解决蔓足类生物污损这一难题提供理论依据,促进我国海洋经济活动的健康持续发展。

以往海洋污损生物的防除通常是采用化学防污剂手段,由于传统的有机锡类防污涂料对海洋生态系统的污染,目前已被禁止使用,深入了解蔓足类附着变态的机制,开发新型、高效、环保防污剂已成为污损生物防除的一个亟待解决的问题。国外虽然对藤壶金星幼虫附着变态的生理和生态机制进行了多年的研究,明确了藤壶金星幼虫的附着变态需要在各种物理、化学、生物因子的介导及适宜的生理状态下才有可能完成,但有关金星幼虫附着变态机制仍有许多工作需要开展,包括以下几个方面:

(1) 藤壶成体提取物和金星幼虫足迹均能诱导金星幼虫的附着变态,其中起决定作用的物质是特殊的糖链,某些凝集素能抑制它的效应。深入研究成体提取物和凝集素之间的相互作用和关系,利用某些凝集素作为防污剂,有可能为我们提供一种新的污损生物防除方法。

(2) 金星幼虫的固着由附着、变态两个连续的过程组成,各种神经递质和激素等信号传导物质在金星幼虫附着和变态中所起的作用是不同的,有的参与白垩腺物质的分泌、有的参与附着、有的参与变态、有的促进最终的固着过程。因此,干扰或阻断这些信号传导物质在金星幼虫附着、变态或固着中的作用,可为开发新的无毒防污剂提供一个方向。

(3) 生物膜及分泌的胞外产物虽然在金星幼虫附着变态中起重要作用,但这种作用是复杂的,其中起具体作用的物质往往难以确定,应进一步加强有关细菌及其分泌产物对金星幼虫附着变态影响及机制的研究。另外,许多海洋生物如藻类、海绵和珊瑚等的有机提取物及次生代谢产物都被证明对藤壶等主要污损生物幼虫具有明显的抑制作用,这可为天然海洋防污产物的筛选提供另外一个途径。

(4) 深入对藤壶胶体的合成、结构组成及固化作用机制的研究。有可能通过人为干扰抑制液态胶的交联聚合过程,阻断其从液态到固态的转变过程,阻碍幼虫的永久固着,从而达到防除污损生物的目标。

(5) 目前,从分子水平对金星幼虫附着变态的研究刚刚起步,今后应更多从分子水平(转录组学、代谢组学、蛋白组学途径)追踪影响金星幼虫基质选择的分子路径。从分子水平对各种神经递质和激素的信号通路进行深入研究,探讨阻断其中某一环节的途径,使金星幼虫不能完成正常的附着变态,可为开发新型、友好、高效的防污剂提供分子靶标和理论依据。

总之,要彻底了解藤壶金星幼虫的附着变态,需要从生态、生理以及分子水平综合入手,阐明藤壶金星幼虫的附着变态机制及其所需条件,通过与物理、化学及材料学等学科的交叉和渗透,期待能开发出高效、环保、无毒的防污技术,最终彻底解决生物污损这一难题。

## References:

- [ 1 ] Li J, Yan T, Cao W H, Chen C, Chen R J. Advances in research of marine fouling in offshore areas. *Marine Science Bulletin*, 2010, 29(1): 113-119.
- [ 2 ] Khandeparker L, Kumar S K. Significance of biofilm proteins in modulating cyprid metamorphosis of *Balanus amphitrite* (Cirripedia: Thoracica). *Marine Ecology*, 2011, 32(4): 509-520.
- [ 3 ] Liu R Y, Ren X Q. *Fauna Sinica Invertebrata*, Vol. 42 (Crustacea, Cirripedia, Thoracica). Beijing: Science Press, 2007: 6-71.
- [ 4 ] Yan T, Li Z F, Hu Y F, Li X X, Cao W H, Luo W J, Cheng Z Q. A review on the balanomorph barnacles in the coastal waters of China. *Acta Ecologica Sinica*, 2012, 32(16): 5230-5241.
- [ 5 ] Aldred N, Scardino A, Cavaco A, Rocky de Nys, Clare A S. Attachment strength is a key factor in the selection of surfaces by barnacle cyprids (*Balanus amphitrite*) during settlement. *Biofouling: The Journal of Bioadhesion and Biofilm Research*, 2010, 26(3): 287-299.
- [ 6 ] Maruzzo D, Conlan S, Aldred N, Clare A S, Høeg J T. Video observation of surface exploration in cyprids of *Balanus amphitrite*: the movements of antennular sensory setae. *Biofouling: The Journal of Bioadhesion and Biofilm Research*, 2011, 27(2): 225-239.
- [ 7 ] Gohad N V, Aldred N, Orihuela B, Clare A S, Rittschof D, Mount A S. Observations on the settlement and cementation of barnacle (*Balanus amphitrite*) cyprid larvae after artificial exposure to noradrenaline and the locations of adrenergic-like receptors. *Journal of Experimental Marine Biology and Ecology*, 2012, 416-417: 153-161.
- [ 8 ] Maréchal J P, Hellio C. Antifouling activity against barnacle cyprid larvae: do target species matter (*Amphibalanus amphitrite* versus *Semibalanus balanoides*)? *International Biodeterioration & Biodegradation*, 2011, 65: 92-101.
- [ 9 ] Anil A C, Khandeparker L, Desai D V, Baragi L V, Gaonkar C A. Larval development, sensory mechanisms and physiological adaptations in acorn barnacles with special reference to *Balanus amphitrite*. *Journal of Experimental Marine Biology and Ecology*, 2010, 392(1/2): 89-98.
- [ 10 ] Khandeparker L, Anil A C. Role of conspecific cues and sugars in the settlement of cyprids of the barnacle, *Balanus amphitrite*. *Journal of Zoology*, 2011, 284(3): 206-214.
- [ 11 ] Maréchal J P, Matsumura K, Conlan S, Hellio C. Competence and discrimination during cyprid settlement in *Amphibalanus amphitrite*. *International Biodeterioration & Biodegradation*, 2012, 72: 59-66.
- [ 12 ] Pradhan N N, Gohad N V, Orihuela B, Burg T C, Birchfield S T, Rittschof D, Mount A S. Development of an automated algorithm for tracking and quantifying Barnacle cyprid settlement behavior. *Journal of Experimental Marine Biology and Ecology*, 2011, 410: 21-28.

- [13] Anil A C, Khandeparkar R D S. Influence of bacterial exopolymers, conspecific adult extract and salinity on the cyprid metamorphosis of *Balanus amphitrite* (Cirrropedia; Thoracica). *Marine Ecology*, 1998, 19(4): 279-292.
- [14] Maki J S, Yule A B, Rittschof D, Mitchell R. The effect of bacterial films on the temporary adhesion and permanent fixation of cypris larvae, *Balanus amphitrite* Darwin. *Biofouling: The Journal of Bioadhesion and Biofilm Research*, 1994, 8(2): 121-131.
- [15] Khandeparkar L, Anil A C. Underwater adhesion: the barnacle way. *International Journal of Adhesion & Adhesives*, 2007, 27(2): 165-172.
- [16] Clare A S, Matsumura K. Nature and perception of barnacle settlement pheromones. *Biofouling: The Journal of Bioadhesion and Biofilm Research*, 2000, 15(1/3): 57-71.
- [17] Lagersson N C, Høeg J T. Settlement behavior and antennular biomechanics in cypris larvae of *Balanus amphitrite* (Crustacea; Thecostraca; Cirripedia). *Marine Biology*, 2002, 141(3): 513-526.
- [18] Nott J A, Foster B A. On the structure of the antennular attachment organ of the cypris larva of *Balanus balanoides* (L.). *Philosophical Transactions of the Royal Society of London (B)*, 1969, 256(803): 115-133.
- [19] Nott J A. Settlement of barnacle larvae: surface structure of the antennular attachment disc by scanning electron microscopy. *Marine Biology*, 1969, 2(3): 248-251.
- [20] Wieczorek S K, Todd C D. Inhibition and facilitation of settlement of epifaunal marine invertebrate larvae by microbial biofilm cues. *Biofouling: The Journal of Bioadhesion and Biofilm Research*, 1998, 12(1/3): 81-118.
- [21] Faimali M, Garaventa F, Terlizzi A, Chiantore M, Cattaneo-Vietti R. The interplay of substrate nature and biofilm formation in regulating *Balanus amphitrite* Darwin, 1854 larval settlement. *Journal of Experimental Marine Biology and Ecology*, 2004, 306(1): 37-50.
- [22] O'Connor N J, Richardson D L. Comparative attachment of barnacle cyprids (*Balanus amphitrite* Darwin 1854; *B. improvisus* Darwin 1854; & *B. eburneus* Gould, 1841) to polystyrene and glass substrata. *Journal of Experimental Marine Biology and Ecology*, 1994, 183(2): 213-225.
- [23] Nasrolahi A, Pansch C, Lenz M, Wah M. Being young in a changing world: how temperature and salinity changes interactively modify the performance of larval stages of the barnacle *Amphibalanus improvisus*. *Marine Biology*, 2012, 159(2): 331-340.
- [24] Dahlström M, Jonsson H, Jonsson P R, Elwing H. Surface wettability as a determinant in the settlement of the barnacle *Balanus improvisus* (DARWIN). *Journal of Experimental Marine Biology and Ecology*, 2004, 305(2): 223-232.
- [25] Guo S F, Lee H P, Khoo S C. Inhibitory effect of ultrasound on barnacle (*Amphibalanus amphitrite*) cyprid settlement. *Journal of Experimental Marine Biology and Ecology*, 2011, 409(1/2): 253-258.
- [26] Matsumura K, Nagano M, Fusetani N. Purification of a larval settlement-inducing protein complex (SIPC) of the barnacle, *Balanus amphitrite*. *The Journal of Experimental Zoology*, 1998, 281(1): 12-20.
- [27] De Gregoris T B, Khandeparkar L, Anil A C, Mesbahi E, Burgess J G, Clare A S. Characterisation of the bacteria associated with barnacle, *Balanus amphitrite*, shell and their role in gregarious settlement of cypris larvae. *Journal of Experimental Marine Biology and Ecology*, 2012, 413: 7-12.
- [28] Olivier F, Tremblay R, Bourget E, Rittschof D. Barnacle settlement: field experiments on the influence of larval supply, tidal level, biofilm quality and age on *Balanus amphitrite* cyprids. *Marine Ecology Progress Series*, 2000, 199: 185-204.
- [29] Tremblay R, Olivier F, Bourget E, Rittschof D. Physiological condition of *Balanus amphitrite* cyprid larvae determines habitat selection success. *Marine Ecology Progress Series*, 2007, 340: 1-8.
- [30] Knight-Jones E W. Laboratory experiments on gregariousness during setting in *Balanus balanoides* and other barnacles. *The Journal of Experimental Biology*, 1953, 30(4): 584-599.
- [31] Crisp D J, Meadows P S. The chemical basis of gregariousness in *Cirripedes*. *Proceedings of the Royal Society of London. Series B, Biological Sciences*, 1962, 156(965): 500-520.
- [32] Larman V N, Gabbot P A, East J. Physico-chemical properties of the settlement factor proteins from the barnacle, *Balanus balanoides*. *Comparative Biochemistry and Physiology Part B: Comparative Biochemistry*, 1982, 72(3): 329-338.
- [33] Matsumura K, Mori S, Nagano M, Fusetani N. Lentil lectin inhibits adult extract-induced settlement of the barnacle, *Balanus amphitrite*. *The Journal of Experimental Zoology*, 1998, 280(3): 213-219.
- [34] Matsumura K, Nagano M, Kato-Yoshinaga Y, Yamazaki M, Clare A S, Fusetani N. Immunological studies on the settlement-inducing protein complex (SIPC) of the barnacle *Balanus amphitrite* and its possible involvement in larva-larva interactions. *Proceedings of the Royal Society B: Biological Sciences*, 1998, 265(1408): 1825-1830.
- [35] Dreanno C, Matsumura K, Dohmae N, Takio K, Hirota H, Kirby R R, Clare A S. An  $\alpha_2$ -macroglobulin-like protein is the cue to gregarious settlement of the barnacle *Balanus amphitrite*. *Proceedings of the National Academy of Sciences of the United States of America*, 2006, 103(39): 14396-14401.
- [36] Dreanno C, Kirby R, Clare A. Locating the barnacle settlement pheromone: spatial and ontogenetic expression of the settlement-inducing protein complex of *Balanus amphitrite*. *Proceedings of the Royal Society B: Biological Sciences*, 2006, 273(1602): 2721-2728.
- [37] Kato-Yoshinaga Y, Nagano M, Mori S, Clare A S, Fusetani N, Matsumura K. Species specificity of barnacle settlement-inducing proteins. *Comparative Biochemistry and Physiology*, 2000, 125(4): 511-516.

- [38] Dreanno C, Kirby R, Clare A. Involvement of the barnacle settlement-inducing protein complex (SIPC) in species recognition at settlement. *Journal of Experimental Marine Biology and Ecology*, 2007, 351(1/2): 276-282.
- [39] Rittschof D. Oyster drills and the frontiers of chemical ecology: Unsettling ideas. *American Malacological Bulletin. Special Edition*, 1985, 1: 111-116.
- [40] Tegtmeyer K, Rittschof D. Synthetic peptide analogs to barnacle settlement pheromone. *Peptides*, 1989, 9(6): 1403-1406.
- [41] Rittschof D, Cohen J H. Crustacean peptide and peptide-like pheromones and kairomones. *Peptides*, 2004, 25(9): 1503-1516.
- [42] Browne K A, Zimmer R K. Controlled field release of a waterborne chemical signal stimulates planktonic larvae to settle. *Biological Bulletin*, 2001, 200(1): 87-91.
- [43] Clare A S, Yamazaki M. Inactivity of glycyl-glycyl-arginine and two putative (QSAR) peptide analogues of barnacle waterborne settlement pheromone. *Journal of the Marine Biological Association of the United Kingdom*, 2000, 80(5): 945-946.
- [44] Elbourne P D, Veater R A, Clare A S. Interaction of conspecific cues in *Balanus amphitrite* Darwin (Cirripedia) settlement assays: Continued argument for the single-larva assay. *Biofouling: The Journal of Bioadhesion and Biofilm Research*, 2008, 24(2): 87-96.
- [45] Hadfield M G, Koehl M A R. Rapid behavioral responses of an invertebrate larva to dissolved settlement cue. *Biological Bulletin*, 2004, 207(1): 28-43.
- [46] Elbourne P D, Clare A S. Ecological relevance of a conspecific, waterborne settlement cue in *Balanus amphitrite* (Cirripedia). *Journal of Experimental Marine Biology and Ecology*, 2010, 392(1/2): 99-106.
- [47] Endo N, Nogata Y, Yoshimura E, Matsumura K. Purification and partial amino acid sequence analysis of the larval settlement-inducing pheromone from adult extracts of the barnacle, *Balanus amphitrite* (= *Amphibalanus amphitrite*). *Biofouling: The Journal of Bioadhesion and Biofilm Research*, 2009, 25(5): 429-434.
- [48] Walker G, Yule A B. Temporary adhesion of the barnacle cyprid: the existence of an antennular adhesive secretion. *Journal of the Marine Biological Association of the United Kingdom*, 1984, 64(3): 679-686.
- [49] Clare A S, Freet R K, McClary M J. On the antennular secretion of the cyprid of *Balanus amphitrite amphitrite*, and its role as a settlement pheromone. *Journal of the Marine Biological Association of the United Kingdom*, 1994, 74(1): 243-250.
- [50] Dreanno C, Kirby R R, Clare A S. Smelly feet are not always a bad thing: the relationship between cyprid footprint protein and the barnacle settlement pheromone (SIPC). *Biology Letters*, 2006, 2(3): 423-425.
- [51] Clare A S, Thomas R F, Rittschof D. Evidence for the involvement of cyclic AMP in the pheromonal modulation of barnacle settlement. *The Journal of Experimental Biology*, 1995, 198(Pt\_3): 655-664.
- [52] Faimali M, Falugi C, Gallus L, Piazza V, Tagliafierro G. Involvement of acetylcholine in settlement of *Balanus amphitrite*. *Biofouling*, 2003, 19(S1): 213-220.
- [53] Yamamoto H, Shimizu K, Tachibana A, Fusetani N. Roles of dopamine and serotonin in larval attachment of the barnacle, *Balanus amphitrite*. *The Journal of Experimental Zoology*, 1999, 284(7): 746-758.
- [54] Okano K, Shimizu K, Satuito C G, Fusetani N. Visualization of cement exocytosis in the cypris cement gland of the barnacle *Megabalanus rosa*. *The Journal of Experimental Biology*, 1996, 199(Pt\_10): 2131-2137.
- [55] Kon-Ya K, Endo M. Catecholamines as settlement inducers of barnacle larvae. *Journal of Marine Biotechnology*, 1995, 2(2): 79-81.
- [56] Yamamoto H, Tachibana A, Kawaii S, Matsumura K, Fusetani N. Serotonin involvement in larval settlement of the barnacle, *Balanus amphitrite*. *The Journal of Experimental Zoology*, 1996, 275(5): 339-345.
- [57] Zega G, Pennati R, Dhalström M, Berntsson K, Sotgia C, De Bernardi F. Settlement of the barnacle *Balanus improvisus*: the roles of dopamine and serotonin. *Italian Journal of Zoology*, 2007, 74(4): 351-361.
- [58] Okazaki Y, Shizuri Y. Identification of the aromatic L-amino acid decarboxylase (AADC) gene and its expression in the attachment and metamorphosis of the barnacle, *Balanus amphitrite*. *Development, Growth & Differentiation*, 2001, 43(1): 33-41.
- [59] Yamamoto H, Tachibana A, Matsumura K, Fusetani N. Protein kinase C (PKC) signal transduction system involved in larval metamorphosis of the barnacle, *Balanus amphitrite*. *Zoological Science*, 1995, 12(4): 391-396.
- [60] Yamamoto H, Okino T, Yoshimura E, Tachibana A, Shimizu K, Fusetani N. Methyl farnesoate induces larval metamorphosis of the barnacle, *Balanus amphitrite* via protein kinase C activation. *The Journal of Experimental Zoology*, 1997, 278(6): 349-355.
- [61] Smith P A, Clare A S, Rees H H, Prescott M C, Wainwright G, Prescott M C. Identification of methyl farnesoate in the cypris larva of the barnacle, *Balanus amphitrite*, and its role as a juvenile hormone. *Insect Biochemistry and Molecular Biology*, 2000, 30(8/9): 885-890.
- [62] Yamamoto H, Kawaii S, Yoshimura E, Tachibana A, Fusetani N. 20-Hydroxyecdysone regulates larval metamorphosis of the barnacle, *Balanus amphitrite*. *Zoological Science*, 1997, 14(6): 887-892.
- [63] Clare A S, Rittschof D, Gerhart D J Jr. Effects of the nonsteroidal ecdysone mimic RH 5849 on larval crustaceans. *The Journal of Experimental Zoology*, 1992, 262(4): 436-440.
- [64] Yamamoto H, Tachibana A, Saikawa W, Nagano M, Nagano M, Matsumura K, Fusetani N. Effects of calmodulin inhibitors on cyprid larvae of the barnacle, *Balanus amphitrite*. *The Journal of Experimental Zoology*, 1998, 280(1): 8-17.

- [65] Zardus J D, Nedved B T, Huang Y, Tran C, Hadfield M G. Microbial biofilms facilitate adhesion in biofouling invertebrates. *Biological Bulletin*, 2008, 214(1): 91-98.
- [66] Thiyagarajan V, Lau S C K, Cheung S C K, Qian P Y. Cypris habitat selection facilitated by microbial films influences the vertical distribution of subtidal barnacle *Balanus trigonus*. *Microbial Ecology*, 2006, 51(4): 431-440.
- [67] Khandeparker L, Anil A C, Raghukumar S. Relevance of biofilm bacteria in modulating the larval metamorphosis of *Balanus amphitrite*. *FEMS Microbiology, Ecology*, 2006, 58(3): 425-438.
- [68] Hung O S, Thiyagarajan V, Qian P Y. Preferential attachment of barnacle larvae to natural multi-species biofilms: does surface wettability matter? *Journal of Experimental Marine Biology and Ecology*, 2008, 361(1): 36-41.
- [69] Wieczorek S K, Clare A S, Todd C D. Inhibitory and facilitatory effects of microbial films on settlement of *Balanus amphitrite amphitrite* larvae. *Marine Ecology Progress Series*, 1995, 119: 221-228.
- [70] Khandeparker L, Anil A C, Raghukumar S. Factors regulating the production of different inducers in *Pseudomonas aeruginosa* with reference to larval metamorphosis in *Balanus amphitrite*. *Aquatic Microbial Ecology*, 2002, 28(1): 37-54.
- [71] O'Connor N J, Richardson D L. Attachment of barnacle (*Balanus amphitrite* Darwin) larvae: responses to bacterial films and extracellular materials. *Journal of Experimental Marine Biology and Ecology*, 1998, 226(1): 115-129.
- [72] Khandeparker L, Anil A C, Raghukumar S. Barnacle larval destination: piloting possibilities by bacteria and lectin interaction. *Journal of Experimental Marine Biology and Ecology*, 2003, 289(1): 1-13.
- [73] Qian P Y, Thiyagarajan V, Lau S C K, Cheung S C K. Relationship between bacterial community profile in biofilm and attachment of the acorn barnacle *Balanus amphitrite*. *Aquatic Microbial Ecology*, 2003, 33(3): 225-237.
- [74] Hung O S, Thiyagarajan V, Zhang R, Wu R S S, Qian P Y. Attachment of *Balanus amphitrite* larvae to biofilms originating from contrasting environments. *Marine Ecology Progress Series*, 2007, 333: 229-242.
- [75] Lau S C K, Thiyagarajan V, Cheung S C K, Qian P Y. Roles of bacterial community composition in biofilms as a mediator for larval settlement of three marine invertebrates. *Aquatic Microbial Ecology*, 2005, 38(1): 41-51.
- [76] Maki J S, Ding L, Stokes J, Kavouras J H, Rittschof D. Substratum/Bacterial interactions and larval attachment: films and exopolysaccharides of *Halomonas marina* (ATCC 25347) and their effect on barnacle cyprid larvae, *Balanus amphitrite* Darwin. *Biofouling*, 2000, 16(2/4): 159-170.
- [77] Tomoyuki J, Cyril G S, Hitoshi K. Sugar compound products of the periphytic diatom *Navicula ramosissima* induce larval settlement in the barnacle, *Amphibalanus amphitrite*. *Marine Biology*, 2007, 152(5): 1065-1076.
- [78] Patil J S, Anil A C. Influence of diatom exopolymers and biofilms on metamorphosis in the barnacle *Balanus Amphitrite*. *Marine Ecology Progress Series*, 2005, 301: 231-245.
- [79] Miron G, Walters L J, Tremblay R, Bourget E. Physiological condition and barnacle larval behavior; a preliminary look at the relationship between TAG/DNA ratio and larval substratum exploration in *Balanus amphitrite*. *Marine Ecology Progress Series*, 2000, 198: 303-310.
- [80] Thiyagarajan V, Harder T, Qiu J W, Qian P Y. Energy content at metamorphosis and growth rate of the early juvenile barnacle *Balanus amphitrite*. *Marine Biology*, 2003, 143(3): 543-554.
- [81] Thiyagarajan V, Harder T, Qian P Y. Relationship between cyprid energy reserves and metamorphosis in the barnacle *Balanus amphitrite* Darwin (Cirripedia; Thoracica). *Journal of Experimental Marine Biology and Ecology*, 2002, 280(1/2): 79-93.
- [82] Thiyagarajan V, Harder T, Qian P Y. Effects of TAG/DNA ratio and age of cyprids on post-metamorphic growth and survival in the barnacle *Balanus amphitrite*. *Journal of the Marine Biological Association of the United Kingdom*, 2003, 83(1): 83-88.
- [83] Anil A C, Desai D, Khandeparker L. Larval development and metamorphosis in *Balanus amphitrite* Darwin (Cirripedia; Thoracica): significance of food concentration, temperature and nucleic acids. *Journal of Experimental Marine Biology and Ecology*, 2001, 263(2): 125-141.
- [84] Shimizu K, Satuito C G, Saikawa W, Fusetani N. Larval storage protein of the barnacle, *Balanus amphitrite*: biochemical and immunological similarities to vitellin. *The Journal of Experimental Zoology*, 1996, 276(2): 87-94.
- [85] Shimizu K, Saikawa W, Fusetani N. Identification and partial characterization of vitellin from the barnacle *Balanus amphitrite*. *Comparative Biochemistry and Physiology Part B: Biochemistry and Molecular Biology*, 1996, 115(1): 111-119.
- [86] Harder T, Thiyagarajan V, Qian P Y. Combined effect of cyprid age and lipid content on larval attachment and metamorphosis of *Balanus amphitrite* Darwin. *Biofouling: the Journal of Bioadhesion and Biofilm Research*, 2001, 17(4): 257-262.
- [87] Satuito C G, Shimizu K, Natoyama K, Yamazaki M, Fusetani N. Age-related settlement success by cyprids of the barnacle *Balanus amphitrite*, with special reference to consumption of cyprid storage protein. *Marine Biology*, 1996, 127(1): 125-130.
- [88] Satuito C G, Shimizu K, Fusetani N. Studies on the factors influencing larval settlement in *Balanus amphitrite* and *Mytilus galloprovincialis*. *Hydrobiologia*, 1997, 358(1/3): 275-280.
- [89] Okazaki Y, Shizuri Y. Structures of six cDNAs expressed specifically at cypris larvae of barnacles, *Balanus amphitrite*. *Gene*, 2000, 250(1/2): 127-135.
- [90] Okazaki Y, Shizuri Y. Effect of inducers and inhibitors on the expression of bcs genes involved in cypris larval attachment and metamorphosis of the barnacles *Balanus amphitrite*. *International Journal of Developmental Biology*, 2000, 44(5): 451-456.

- [91] Li H L, Thiyagarajan V, Qian P Y. Response of cyprid specific genes to natural settlement cues in the barnacle *Balanus* (= *Amphibalanus*) *amphitrite*. *Journal of Experimental Marine Biology and Ecology*, 2010, 389(1/2): 45-52.
- [92] Thiyagarajan V, Qian P Y. Proteomic analysis of larvae during development, attachment, and metamorphosis in the fouling barnacle, *Balanus amphitrite*. *Proteomics*, 2008, 8(15): 3164-3172.
- [93] Thiyagarajan V, Wong T, Qian P Y. 2D Gel-based proteome and phosphoproteome analysis during larval metamorphosis in two major marine biofouling invertebrates. *Journal of Proteome Research*, 2009, 8(6): 2708-2719.
- [94] Zang Y, Xu Y, Arellano S M, Xiao K, Qian P Y. Comparative proteome and phosphoproteome analyses during cyprid development of the barnacle *Balanus* (= *Amphibalanus*) *amphitrite*. *Journal of Proteome Research*, 2010, 9(6): 3146-3157.
- [95] Cao W H, Yan T, Li J, Chen R J, Yang T X, Liu Y H. Ecological characteristics of fouling acorn barnacles in China—a review. *Journal of Guangxi Academy of Sciences*, 2010, 26(1): 67-73.
- [96] Chen C C, Xiang L Y, Liu H Q. Adhesion mechanism and prevention of marine biofouling barnacle. *Marine Environmental Science*, 2012, 31(4): 621-624.
- [97] Feng D Q, Ke C H, Lu C Y, Li S J. Laboratory rearing and settlement behavior of *Balanus albicostatus* cyprid—an model animal for screening natural antifouling agents. *Oceanologia et Limnologia Sinica*, 2008, 39(4): 395-400.
- [98] Yan T, Xie E Y, Cao W H, Liu S S, He M X, Dong Y, Yan W X. Collection and culture for larvae and spores of four common fouling species in coastal waters of southern China. *Journal of Tropical Oceanography*, 2011, 30(3): 56-61.
- [99] Yan W X, Chen X Q. Development of the larvae of *Balanus reticulatus* Utinomi // South China Sea Institute of Oceanology, Chinese Academy of Sciences. *Nanhai Studia Marine Sinica* (No. 1). Beijing: Science Press, 1980: 125-134.
- [100] Yan W X, Pang J L, Chen X Q. Settlement of *Balanus reticulatus* Utinomi // South China Sea Institute of Oceanology, Chinese Academy of Sciences. *Nanhai Studia Marine Sinica* (No. 4). Beijing: Science Press, 1983: 65-73.
- [101] Liang Z, Pang J L, Sun H L. Effects of copper and pH on larval attachment of barnacle *Balanus reticulatus* Utinomi. *Acta Oceanologica Sinica*, 1983, 5(4): 526-529.
- [102] Yan W X, Dong Y, Yin F. Comparison between the primary and secondary cements of *Balanus reticulatus* Utinomi. *Journal of Tropical Oceanography*, 1983, 2(3): 1-7.
- [103] Yan T, Fang Z X, Zhang S, Yan W X. The separation of barnacle cement components. *Journal of Tropical Oceanography*, 1996, 15(3): 61-66.
- [104] Huang Y, Ke C H, Zhou S Q. Advancements in research on settlement of barnacles larvae. *Marine Sciences*, 2001, 25(3): 30-32.

#### 参考文献:

- [1] 李静, 严涛, 曹文浩, 陈池, 陈如江. 近海污损生物生态研究进展. *海洋通报*, 2010, 29(1): 113-119.
- [3] 刘瑞玉, 任先秋. 中国动物志——无脊椎动物第四十二卷(甲壳动物亚门, 蔓足下纲, 围胸总目). 北京: 科学出版社, 2007: 6-71.
- [4] 严涛, 黎祖福, 胡煜峰, 李鑫渲, 曹文浩, 罗文佳, 程志强. 中国沿海无柄蔓足类研究进展. *生态学报*, 2012, 32(16): 5230-5241.
- [95] 曹文浩, 严涛, 李静, 陈如江, 杨天笑, 刘永宏. 中国沿海污损性无柄蔓足类生态特点概述. *广西科学院学报*, 2010, 26(1): 67-73.
- [96] 陈长春, 项凌云, 刘汉奇. 海洋污损生物藤壶的附着与防除. *海洋环境科学*, 2012, 31(4): 621-624.
- [97] 冯丹青, 柯才焕, 卢昌义, 李少菁. 白脊藤壶(*Balanus albicostatus*)应用于天然海洋防污产物筛选模型的研究. *海洋与湖沼*, 2008, 39(4): 395-400.
- [98] 严涛, 谢恩义, 曹文浩, 刘姗姗, 何毛贤, 董钰, 严文侠. 华南沿海 4 种主要污损生物幼虫和孢子的采集与培养技术. *热带海洋学报*, 2011, 30(3): 56-61.
- [99] 严文侠, 陈兴乾. 网纹藤壶的幼虫发育 // 中国科学院南海海洋研究所. *南海海洋科学集刊(第 1 集)*. 北京: 科学出版社, 1980: 125-134.
- [100] 严文侠, 庞景梁, 陈兴乾. 网纹藤壶的附着 // 中国科学院南海海洋研究所. *南海海洋科学集刊(第 4 集)*. 北京: 科学出版社, 1983: 65-73.
- [101] 梁志, 庞景梁, 孙恢礼. 铜和 pH 对网纹藤壶幼虫附着的影响. *海洋学报*, 1983, 5(4): 526-529.
- [102] 严文侠, 董钰, 尹芬. 网纹藤壶初生胶和次生胶比较. *热带海洋*, 1983, 2(3): 1-7.
- [103] 严涛, 方正信, 张穗, 严文侠. 藤壶胶组分的分离制备. *热带海洋*, 1996, 15(3): 61-66.
- [104] 黄英, 柯才焕, 周时强. 国外对藤壶幼体附着的研究进展. *海洋科学*, 2001, 25(3): 30-32.

**ACTA ECOLOGICA SINICA Vol. 33 ,No. 16 Aug. ,2013( Semimonthly)**  
**CONTENTS**

**Frontiers and Comprehensive Review**

- Advances in theoretical issues of species distribution models ..... LI Guoqing, LIU Changcheng, LIU Yuguo, et al (4827)
- A review on rare earth elements in farmland ecosystem ..... JIN Shulan, HUANG Yizong (4836)
- A review on the mechanism of attachment and metamorphosis in barnacle cyprids ... RAO Xiaozhen, LIN Gang, XU Youqin (4846)
- Decision making in group living animals ..... WANG Chengliang, WANG Xiaowei, QI Xiaoguang, et al (4857)

**Autecology & Fundamentals**

- Influence of monsoon's advancing, retreating and conversion on migrations of *Nilaparvata lugens* (Stål) in China .....  
..... BAO Yunxuan, HUANG Jinying, XIE Xiaojin, et al (4864)
- Prey selection and feeding rate of sea stars *Asterias amurensis* and *Asterina pectinifera* on three bivalves .....  
..... QI Zhanhui, WANG Jun, MAO Yuze, et al (4878)
- Habitat selection of Whooper Swan at Bayanbulak in Xinjiang of China ..... DONG Chao, ZHANG Guogang, LU Jun, et al (4885)
- The genetic structure of endemic plant *Pteroceltis tatarinowii* by ISSR markers .....  
..... LI Xiaohong, ZHANG Hui, WANG Deyuan, et al (4892)
- Genetic analysis of salt tolerance of F<sub>1</sub> progenies between chrysanthemum and the intergeneric hybrid of chrysanthemum and  
crossostephium ..... XU Lili, CHEN Fadi, CHEN Sumei, et al (4902)
- Indicative effect of the anatomical structure of plant photosynthetic organ on WUE in desert region .....  
..... ZHANG Haina, SU Peixi, LI Shanxia, et al (4909)
- Effects of water on photosynthesis in different age of tomato leaves ..... CHEN Kaili, LI Jianming, HE Huiqiang, et al (4919)
- Photosynthesis-nitrogen relationship in evergreen and deciduous tree species at different altitudes on Mao'er Mountain, Guangxi .....  
..... BAI Kundong, JIANG Debing, WAN Xianchong (4930)
- Effect of fertilization on the dynamic of soil N<sub>2</sub>O fluxes in Chinese chestnut stands .....  
..... ZHANG Jiaojiao, LI Yongfu, JIANG Peikun, et al (4939)
- Effects of long-term fertilization on aggregate dynamics and organic carbon and total nitrogen contents in a reddish paddy soil .....  
..... LIU Xiyu, WANG Zhongqiang, ZHANG Xinyu, et al (4949)

**Population, Community and Ecosystem**

- Carbon storage of natural wetland ecosystem in Daxing'anling of China ..... MU Changcheng, WANG Biao, LU Huicui, et al (4956)
- Monitoring the riparian vegetation cover after the Wenchuan earthquake along the Minjiang River valley based on multi-temporal  
Landsat TM images; a case study of the Yingxiu-Wenchuan section ..... XU Jiceng, TANG Bin, LU Tao (4966)
- A dynamic analysis of spatial distribution pattern of *Larix gmelinii* natural forest in Pangu farm under varying intensity of fire  
disturbance ..... NI Baolong, LIU Zhaogang (4975)
- Structure of macrozoobenthos in lakes along the Yangtze River and relationships with environmental characteristics .....  
..... CAI Yongjiu, JIANG Jiahu, ZHANG Lu, et al (4985)
- The research on the age structure and sex ratio of *Niviventer confucianus* in Thousand Island Lake .....  
..... ZHANG Xu, BAO Yixin, LIU Jun, et al (5000)
- Mathematical model of insect Logistic increasing and economic threshold based on sex pheromone trap .....  
..... ZHAO Zhiguo, RONG Erhua, ZHAO Zhihong, et al (5008)
- Community composition and phototaxis of insects in tea plantations in Southern Jiangshu Province during late fall .....  
..... ZHENG Yingcha, NIU Yuqun, CUI Guiling, et al (5017)
- Effect of agricultural land use types on soil mite communities in north China .....  
..... HAN Xuemei, LI Dandan, LIANG Zian, et al (5026)

**Landscape, Regional and Global Ecology**

- Exploring the space syntax under negative planning; a case study of landscape connectivity based on the behaviors of avian edge  
species ..... YANG Tianxiang, ZHANG Weiqian, FAN Zhengqiu, et al (5035)
- Temporal-spatial variation of heterotrophic respiration in alpine area of southwestern China .....  
..... ZHANG Yuandong, PANG Rui, GU Fengxue, et al (5047)

- Variability of soil organic matter and its main factors in Jiangsu Province ..... ZHAO Mingsong, ZHANG Ganlin, LI Decheng, et al (5058)
- Spatial distribution and change of vegetation carbon in Northwest Guangxi, China on the basis of vegetation inventory data ..... ZHANG Mingyang, LUO Weijian, LIU Huiyu, et al (5067)
- Resource and Industrial Ecology**
- Urban metabolism process based on emergy synthesis; a case study of Beijing ..... LIU Gengyuan, YANG Zhifeng, CHEN Bin (5078)
- Evaluation on cultivated land ecological security based on the PSR model and matter element analysis ..... ZHANG Rui, ZHENG Huawei, LIU Youzhao (5090)
- The effect of super absorbent polymer on the growth and nutrition absorption of *Festuca arundinacea* L. on an improved gangue matrix ..... ZHAO Zhifeng, WANG Dongmei, ZHAO Tingning (5101)
- Urban, Rural and Social Ecology**
- The effect of distance on the ecological conservation value; a case study of Sanjiang Plain Wetland ..... AO Changlin, CHEN Jinting, JIAO Yang, et al (5109)
- Research Notes**
- Scaling effect on spatial variation of soil organic carbon in mountainous areas of Guangdong Province ..... JIANG Chun, WU Zhifeng, QIAN Lexiang, et al (5118)
- The changes of hair length and pelage thermal insulation in captive female squirrel, *Sciurus vulgarize manchuricus*, during autumn molting period ..... JING Pu, ZHANG Wei, HUA Yan, et al (5126)



# 《生态学报》2013 年征订启事

《生态学报》是由中国科学技术协会主管,中国生态学学会、中国科学院生态环境研究中心主办的生态学高级专业学术期刊,创刊于1981年,报道生态学领域前沿理论和原始创新性研究成果。坚持“百花齐放,百家争鸣”的方针,依靠和团结广大生态学科工作者,探索生态学奥秘,为生态学基础理论研究搭建交流平台,促进生态学研究深入发展,为我国培养和造就生态学科人才和知识创新服务、为国民经济建设和发展服务。

《生态学报》主要报道生态学及各分支学科的重要基础理论和应用研究的原始创新性科研成果。特别欢迎能反映现代生态学发展方向的优秀综述性文章;研究简报;生态学新理论、新方法、新技术介绍;新书评价和学术、科研动态及开放实验室介绍等。

《生态学报》为半月刊,大16开本,300页,国内定价90元/册,全年定价2160元。

国内邮发代号:82-7,国外邮发代号:M670

标准刊号:ISSN 1000-0933 CN 11-2031/Q

全国各地邮局均可订阅,也可直接与编辑部联系购买。欢迎广大科技工作者、科研单位、高等院校、图书馆等订阅。

通讯地址:100085 北京海淀区双清路18号 电话:(010)62941099; 62843362

E-mail: shengtaixuebao@rcees.ac.cn 网址: www.ecologica.cn

本期责任副主编 王克林 编辑部主任 孔红梅 执行编辑 刘天星 段靖

生态学报

(SHENGTAI XUEBAO)

(半月刊 1981年3月创刊)

第33卷 第16期 (2013年8月)

ACTA ECOLOGICA SINICA

(Semimonthly, Started in 1981)

Vol. 33 No. 16 (August, 2013)

编辑 《生态学报》编辑部  
地址:北京海淀区双清路18号  
邮政编码:100085  
电话:(010)62941099  
www.ecologica.cn  
shengtaixuebao@rcees.ac.cn

主编 王如松  
主管 中国科学技术协会  
主办 中国生态学学会  
中国科学院生态环境研究中心  
地址:北京海淀区双清路18号  
邮政编码:100085

出版 科学出版社  
地址:北京东黄城根北街16号  
邮政编码:100717

印刷 北京北林印刷厂  
发行 科学出版社  
地址:东黄城根北街16号  
邮政编码:100717  
电话:(010)64034563  
E-mail: journal@espg.net

订购 全国各地邮局  
国外发行 中国国际图书贸易总公司  
地址:北京399信箱  
邮政编码:100044

广告经营 京海工商广字第8013号  
许可证

Edited by Editorial board of  
ACTA ECOLOGICA SINICA  
Add: 18, Shuangqing Street, Haidian, Beijing 100085, China  
Tel: (010)62941099  
www.ecologica.cn  
shengtaixuebao@rcees.ac.cn

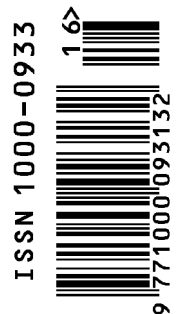
Editor-in-chief WANG Rusong  
Supervised by China Association for Science and Technology  
Sponsored by Ecological Society of China  
Research Center for Eco-environmental Sciences, CAS  
Add: 18, Shuangqing Street, Haidian, Beijing 100085, China

Published by Science Press  
Add: 16 Donghuangchenggen North Street,  
Beijing 100717, China

Printed by Beijing Bei Lin Printing House,  
Beijing 100083, China

Distributed by Science Press  
Add: 16 Donghuangchenggen North  
Street, Beijing 100717, China  
Tel: (010)64034563  
E-mail: journal@espg.net

Domestic All Local Post Offices in China  
Foreign China International Book Trading  
Corporation  
Add: P. O. Box 399 Beijing 100044, China



ISSN 1000-0933  
CN 11-2031/Q

国内外公开发行

国内邮发代号 82-7

国外发行代号 M670

定价 90.00 元